



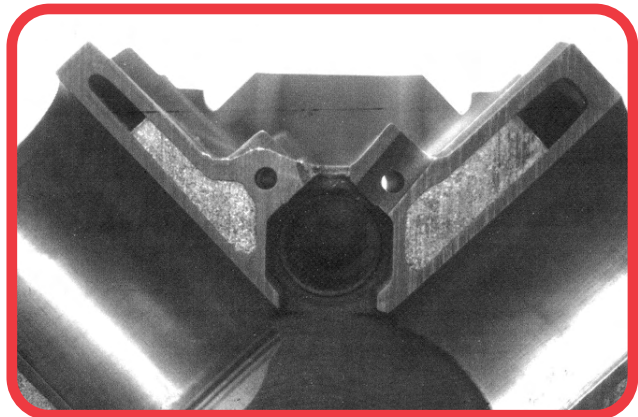
Hard Blok[®]

Water Jacket Filler

THE PREMIUM BLOCK FILLER *THE PROVEN WINNING ADVANTAGE*



- **MORE HORSEPOWER**
- **STIFFENS CYLINDER WALLS**
- **REDUCES BLOW-BY & COMPRESSION LOSS**
- **EXTENDED ENGINE LIFE**
- **DAMPENS HARMONIC VIBRATIONS**
- **ADDS BOTTOM END RIGIDITY**



**CUT-AWAY 454 WITH HARDBLOK IN PERFECT
CONDITION AFTER 4 YEARS AND OVER 500 PASSES.**

THE PROVEN PERFORMANCE ADVANTAGE FOR BOTH DRAG RACING AND CIRCLE TRACK.



COMPARATIVE COMPETITIVE DATA



HARDBLOK PREMIUM FILLER

- Easy to mix and pour. Dual, pre-measured packaging is convenient for typical V-8 installations. Detailed instructions included.
- Ample working time to pour and install torque plates.
- No high heat build up during setting to cause distortion.
- Rapid strength gain. Can hone and assemble 24 hours after completion.
- Does not shrink, does not expand.
- Optimum ratio of graded iron for strength, vibration dampening, and thermal expansion.
- Stable under water. Will not erode.
- Non-hazardous.
- Track-tested since 1984 with perfect success.

OTHER PRODUCTS

- Packaging requires user to guess at amount needed.
- Proper mix ratio of water-to-powder not specified. Results in improper mix.
- Quick-set materials do not allow time to properly fill and install torque plates.
- Quick-set cements and epoxies can generate high heat that distorts thin or unsupported engine sections.
- Some gain strength too slowly for quick assembly. Some require 28 days!
- Some shrink when mixed wet enough to pour into blocks. Some expand 0.3% and will distort walls and critical engine sections.
- No iron content. Addition of "shop iron" may actually weaken a mix due to poor sizing and impurities.
- Gypsum-based materials erode under water. Potential water pump damage.
- Epoxy hardener component is usually corrosive and hazardous.
- None have the record of HARDBLOK!

**WHY YOU SHOULD BE USING
GENUINE HARDBLOK
- INSIST ON THE ORIGINAL -**

Gain Horsepower – Stiffening cylinder walls reduces blow-by and compression loss.

Extended Engine Life – Dampens harmonic vibrations, adds bottom end rigidity, results in less metal transfer from block to caps.

Less honing required to true-up cylinders when freshening or rebuilding.

Block fillers are permanent. Use only the Premium - HardBlok!

Available through leading warehouse distributors, parts houses, & engine builders.



**FOR MORE INFORMATION, VISIT US ON THE WEB AT
WWW.HARDBLOK.COM**

